

KFD Flexible Kwik Fit Series Installation Instructions (For Single Walled Sumps)

STEP 1 Using the correct hole saw, drill a hole in the single walled sump. (3" for Small, 5" for Medium, and 6 5/8" for Large)

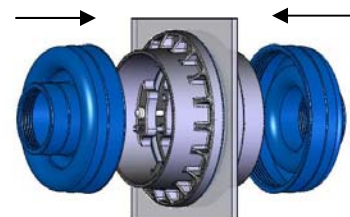
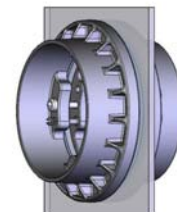
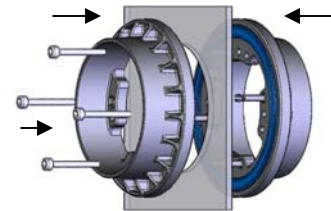
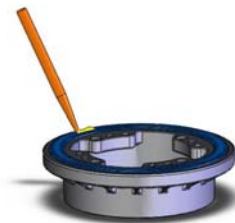
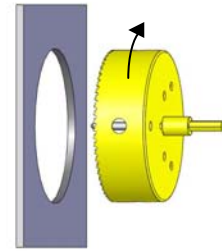
STEP 2 Prepare the inside and outside sump surfaces with a sander to ensure that they are smooth and clean. Make sure that there are no surface imperfections that could cause a leak. Once this is done, clean the surfaces with Acetone in preparation for the installation of the entry fitting.

STEP 3 Apply a 1/4" bead of Petrol-Seal to the seal of both the internal and external housings just prior to installing the fittings. Align the locating pins in the external housing with the corresponding holes in the internal housing and snap the fitting together. (Use care to ensure that there is no debris trapped between the sump wall and the housing seal.)

STEP 4 Insert the bolts into the interior housing through the center holes in the housing tabs and tighten until snug. While the housings are still loose ensure that they are centered in the hole through the sump and then tighten the first bolt. Working in a star pattern, gradually tighten all bolts to 65 inch lbs.

STEP 5 Run a bead of Petrol-Seal around the outside seam of the internal and external housings and clean up any excess material that may have pushed out.

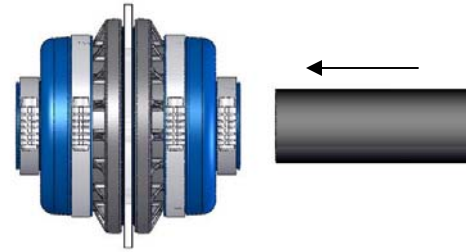
STEP 6 Install the interior and exterior flex boots to their corresponding housings. Install the boots carefully to the housings and tighten the clamp to 65 inch lbs. (Use care to make sure that there is no debris trapped between the boot and the housing.)



KFD Flexible Kwik Fit Series Installation Instructions (For Single Walled Sumps)

STEP 7

Install the pipe through the fitting. The pipe to boot interface points should be cleaned and inspected for grooves or gouges. If there are surface imperfections these should be sanded as smooth as possible prior to tightening the clamps. Tighten clamps to 65 inch lbs. It is important to ensure that the pipe enters the fittings as straight as possible. Allowing the pipe to penetrate the sumps at angles can cause unnecessary stresses on the boots and could cause leaks to develop later.



STEP 8

Apply a liberal coating of Anti Corrosion spray to the internal and external band clamps to help protect them from corrosion.

STEP 9

Take care not to abuse the fittings during the remaining construction and backfilling stages. Practices such as applying foreign materials or physically wrapping the penetration fitting can cause problems in the future and should be avoided.

