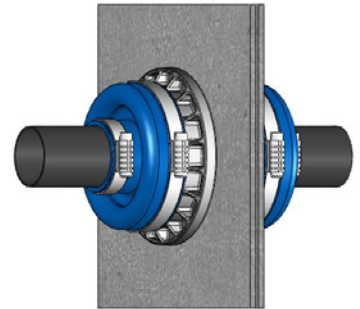


KFD Repair Kit Installation Instructions (For Continuously Monitored Sumps)

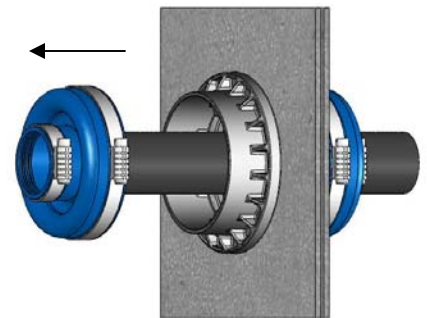
STEP 1

Locate the leaking fitting and prepare as much access as possible for the repair.



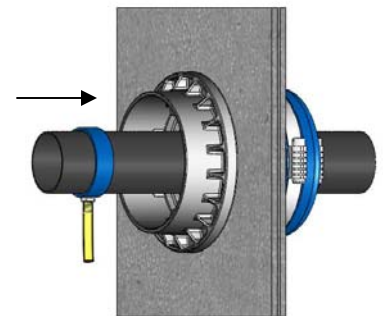
STEP 2

Remove the interior flex boot and slide it back on the pipe as far as possible to make access for the repair.



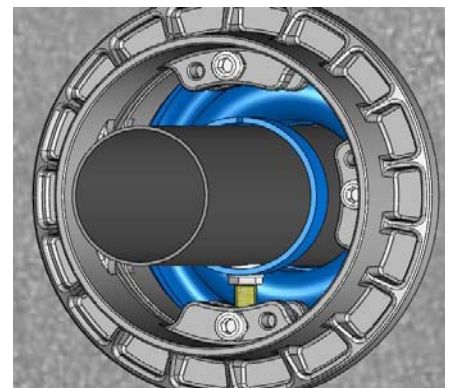
STEP 3

Install the split repair band around the pipe and cut the strap to the desired length. The strap should fit loosely around the secondary pipe. Apply Blue Seal Glue to both edges of the strap and hold it together until it is fully bonded. Position the strap so that the communication tubing is located at the 6 o'clock position.



STEP 4

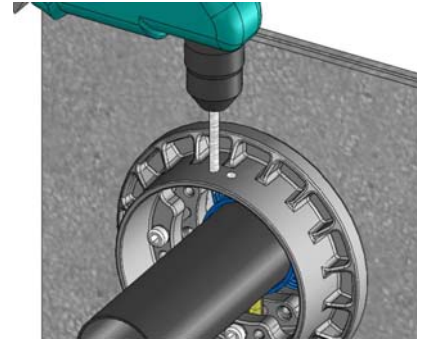
The communication tubing should be long enough to extend from the bottom of the strap down to the interstitial opening of the double walled sump. Cut the communication strap to the desired length and slide the repair band into the center of the fitting and ensure that the tubing is positioned directly over the interstitial opening between the housing tabs.



KFD Repair Kit Installation Instructions (For Continuously Monitored Sumps)

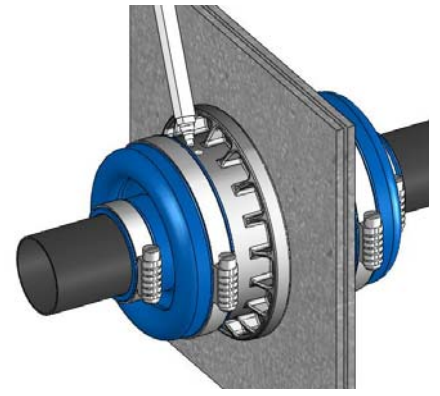
STEP 5

Drill two 1/4" holes at the 12 o'clock position in the housing flange. These should be positioned 3/8" off the outer edge of the stiffening ribs. One hole is for filling, one hole is for venting.



STEP 6

Reinstall the interior flex boot and loosely tighten the band clamps to hold the boot in position. Pull the boot back just enough at the top to expose the fill and vent holes and re-snug the clamps. Fill the entire boot cavity with Blue Fill 4036 until the filler begins to run out of the vent hole. There should be no visible air bubbles in the boot. Once the boot is full, carefully loosen the large clamp and push the top of the boot to the fully seated position and re-tighten all the clamps.



STEP 7

Clean up any excess material quickly as it sets up rapidly and allow 24 hours for the Blue Fill 4036 to fully set before testing.

