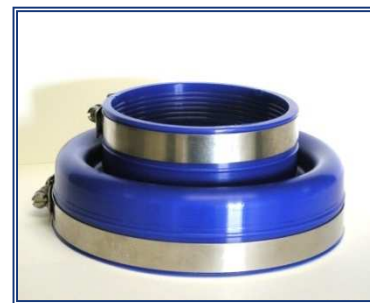


The PER Series Pellethane Reducers and Test Reducers are used to step down from secondary to primary pipe sizes. The Test Reducers are available with or without an air valve and can be used to test the interstitial space between the secondary and primary piping for leaks. All fittings come with band clamps and with or without air test valves.



| Part Number | Dimensions | | | Description | List Price |
|-------------------|------------|------|-----|--|------------|
| | (a) | (b) | (c) | | |
| PER 1.375x1.25 | 1.375 | 1.25 | n/a | Pellethane Reducer | \$22 |
| PER 1.375x1.25A | 1.375 | 1.25 | n/a | Pellethane Reducer with air test | \$28 |
| PER 1.6x1.2 | 1.6 | 1.2 | n/a | Pellethane Reducer | \$14 |
| PER 1.6x1.2A | 1.6 | 1.2 | n/a | Pellethane Reducer with air test | \$20 |
| PER 1.8x1.4 | 1.8 | 1.4 | n/a | Pellethane Reducer | \$21 |
| PER 1.8x1.4A | 1.8 | 1.4 | n/a | Pellethane Reducer with air test | \$27 |
| PER 1.9x1.9 | 1.9 | 1.9 | n/a | Pellethane Reducer | \$22 |
| PER 1.9x1.9A | 1.9 | 1.9 | n/a | Pellethane Reducer with air test | \$28 |
| PER 2.0x2.0 | 2.0 | 2.0 | n/a | Pellethane Reducer | \$22 |
| PER 2.0x2.0A | 2.0 | 2.0 | n/a | Pellethane Reducer with air test | \$28 |
| PER 2.4x1.4 | 2.4 | 1.4 | n/a | Pellethane Reducer | \$24 |
| PER 2.4x1.4A | 2.4 | 1.4 | n/a | Pellethane Reducer with air test | \$30 |
| PER 2.4x2.0 | 2.4 | 2.0 | n/a | Pellethane Reducer | \$24 |
| PER 2.4x2.0A | 2.4 | 2.0 | n/a | Pellethane Reducer with air test | \$30 |
| PER 2.4x2.4 | 2.4 | 2.4 | n/a | Pellethane Reducer | \$24 |
| PER 2.4x2.4A | 2.4 | 2.4 | n/a | Pellethane Reducer with air test | \$30 |
| PER 2.5x2.0 | 2.5 | 2.0 | n/a | Pellethane Reducer | \$19 |
| PER 2.5x2.0A | 2.5 | 2.0 | n/a | Pellethane Reducer with air test | \$25 |
| PER 2.5x2.5 | 2.5 | 2.5 | n/a | Pellethane Reducer | \$26 |
| PER 2.5x2.5A | 2.5 | 2.5 | n/a | Pellethane Reducer with air test | \$32 |
| PER 2.61x2.38LCX | 2.61 | 2.38 | n/a | Pellethane Reducer | \$26 |
| PER 2.61x2.38LCXA | 2.61 | 2.38 | n/a | Pellethane Reducer with air test | \$32 |
| PER 2.7x2.7 | 2.7 | 2.7 | n/a | Pellethane Reducer | \$28 |
| PER 2.7x2.7A | 2.7 | 2.7 | n/a | Pellethane Reducer with air test | \$34 |
| PER 3.0x2.5 | 3.0 | 2.5 | n/a | Pellethane Reducer | \$17 |
| PER 3.0x2.5A | 3.0 | 2.5 | n/a | Pellethane Reducer with air test | \$23 |
| PER 3.5x1.4 | 3.5 | 1.4 | n/a | Pellethane Reducer | \$22 |
| PER 3.5x1.4A | 3.5 | 1.4 | n/a | Pellethane Reducer with air test | \$28 |
| PER 3.5x1.6 | 3.5 | 1.6 | n/a | Pellethane Reducer | \$28 |
| PER 3.5x1.6A | 3.5 | 1.6 | n/a | Pellethane Reducer with air test | \$34 |
| PER 3.5x2.4 | 3.5 | 2.4 | n/a | Pellethane Reducer | \$28 |
| PER 3.5x2.4A | 3.5 | 2.4 | n/a | Pellethane Reducer with air test | \$34 |
| PER 3.5x2.4OS | 3.5 | 2.4 | n/a | Pellethane Reducer (off-set) | \$54 |
| PER 3.5x2.4OSA | 3.5 | 2.4 | n/a | Pellethane Reducer with air test (off-set) | \$60 |
| PER 3.5x2.5 | 3.5 | 2.5 | n/a | Pellethane Reducer (short, 2") | \$26 |
| PER 3.5x2.7 | 3.5 | 2.7 | n/a | Pellethane Reducer (short, 2") | \$28 |

The PER Series Pellethane Reducers and Test Reducers are used to step down from secondary to primary pipe sizes. The Test Reducers are available with or without an air valve and can be used to test the interstitial space between the secondary and primary piping for leaks. All fittings come with band clamps and with or without air test valves.



| Part Number | Dimensions | | | Description | List Price |
|------------------|------------|-----|-----|--|------------|
| | (a) | (b) | (c) | | |
| PER 3.5x3.5 | 3.5 | 3.5 | n/a | Pellethane Reducer | \$28 |
| PER 3.5x3.5A | 3.5 | 3.5 | n/a | Pellethane Reducer with air test | \$34 |
| PER 3.72x3.5LCX | 3.72 | 3.5 | n/a | Pellethane Reducer | \$29 |
| PER 3.72x3.5LCXA | 3.72 | 3.5 | n/a | Pellethane Reducer with air test | \$35 |
| PER 3.9x2.4 | 3.9 | 2.4 | n/a | Pellethane Reducer | \$35 |
| PER 3.9x2.4A | 3.9 | 2.4 | n/a | Pellethane Reducer with air test | \$41 |
| PER 3.9x3.9 | 3.9 | 3.9 | n/a | Pellethane Reducer | \$29 |
| PER 3.9x3.9A | 3.9 | 3.9 | n/a | Pellethane Reducer with air test | \$35 |
| PER 4.5x2.5 | 4.5 | 3.5 | 2.5 | Tri-Seal Pellethane Reducer | \$37 |
| PER 4.5x2.5A | 4.5 | 3.5 | 2.5 | Tri-Seal Pellethane Reducer with air test | \$43 |
| PER 4.5x2.7 | 4.5 | 3.5 | 2.7 | Tri-Seal Pellethane Reducer | \$42 |
| PER 4.5x2.7A | 4.5 | 3.5 | 2.7 | Tri-Seal Pellethane Reducer with air test | \$48 |
| PER 4.5x3.5 | 4.5 | 3.5 | n/a | Pellethane Reducer | \$37 |
| PER 4.5x3.5A | 4.5 | 3.5 | n/a | Pellethane Reducer with air test | \$43 |
| PER 4.5x3.5OS | 4.5 | 3.5 | n/a | Pellethane Reducer (off-set) | \$61 |
| PER 4.5x3.5OSA | 4.5 | 3.5 | n/a | Pellethane Reducer with air test (off-set) | \$67 |
| PER 4.72x4.5LCX | 4.72 | 4.5 | n/a | Pellethane Reducer | \$34 |
| PER 4.72x4.5LCXA | 4.72 | 4.5 | n/a | Pellethane Reducer with air test | \$40 |
| PER 4.8x1.9x1.4 | 4.8 | 1.9 | 1.4 | Pellethane Reducer | \$61 |
| PER 4.8x1.9x1.4A | 4.8 | 1.9 | 1.4 | Pellethane Reducer with air test | \$67 |
| PER 4.8x2.0 | 4.8 | 2 | n/a | Pellethane Reducer | \$37 |
| PER 4.8x2.0A | 4.8 | 2 | n/a | Pellethane Reducer with air test | \$43 |
| PER 4.8x2.5 | 4.8 | 2.5 | n/a | Pellethane Reducer | \$38 |
| PER 4.8x2.5A | 4.8 | 2.5 | n/a | Pellethane Reducer with air test | \$43 |
| PER 4.9x3.9 | 4.9 | 3.9 | n/a | Pellethane Reducer | \$42 |
| PER 4.9x3.9A | 4.9 | 3.9 | n/a | Pellethane Reducer with air test | \$48 |
| PER 5.25x2.0 | 5.25 | 2.0 | n/a | Pellethane Reducer for TCI Cuff | \$43 |
| PER 5.25x2.5 | 5.25 | 2.5 | n/a | Pellethane Reducer for TCI Cuff | \$43 |
| PER 5.5x2.0 | 5.5 | 2 | n/a | Pellethane Reducer | \$43 |
| PER 5.5x2.0A | 5.5 | 2 | n/a | Pellethane Reducer with air test | \$49 |
| PER 5.5x2.5 | 5.5 | 2.5 | n/a | Pellethane Reducer | \$43 |
| PER 5.5x2.5A | 5.5 | 2.5 | n/a | Pellethane Reducer with air test | \$49 |
| PER 5.5x2.7 | 5.5 | 2.7 | n/a | Pellethane Reducer | \$43 |
| PER 5.5x2.7A | 5.5 | 2.7 | n/a | Pellethane Reducer with air test | \$49 |
| PER 5.5x3.0 | 5.5 | 3 | n/a | Pellethane Reducer | \$47 |
| PER 5.5x3.0A | 5.5 | 3 | n/a | Pellethane Reducer with air test | \$53 |

The PER Series Pellethane Reducers and Test Reducers are used to step down from secondary to primary pipe sizes. The Test Reducers are available with or without an air valve and can be used to test the interstitial space between the secondary and primary piping for leaks. All fittings come with band clamps and with or without air test valves.

| Part Number | Dimensions | | | Description | List Price |
|------------------|------------|-----|-----|----------------------------------|------------|
| | (a) | (b) | (c) | | |
| PER 5.5x3.5 | 5.5 | 3.5 | n/a | Pellethane Reducer | \$ 47 |
| PER 5.5x3.5A | 5.5 | 3.5 | n/a | Pellethane Reducer with air test | \$ 53 |
| PER 5.5x3.5x2.5 | 5.5 | 3.5 | 2.5 | Pellethane Reducer | \$ 47 |
| PER 5.5x3.5x2.5A | 5.5 | 3.5 | 2.5 | Pellethane Reducer with air test | \$ 53 |
| PER 5.5x4.8 | 5.5 | 4.8 | n/a | Pellethane Reducer | \$ 43 |
| PER 5.5x4.8A | 5.5 | 4.8 | n/a | Pellethane Reducer with air test | \$ 49 |
| PER 6.8x1.9x1.4 | 6.8 | 1.9 | 1.4 | Pellethane Reducer | \$ 109 |
| PER 6.8x1.9x1.4A | 6.8 | 1.9 | 1.4 | Pellethane Reducer with air test | \$ 115 |
| PER 6.8x4.5 | 6.8 | 4.5 | n/a | Pellethane Reducer | \$ 43 |
| PER 6.8x4.5A | 6.8 | 4.5 | n/a | Pellethane Reducer with air test | \$ 49 |
| PER 7.5x3.5 | 7.5 | 3.5 | n/a | Pellethane Reducer | \$ 54 |
| PER 7.5x3.5A | 7.5 | 3.5 | n/a | Pellethane Reducer with air test | \$ 60 |
| PER 7.5x4.5 | 7.5 | 4.5 | n/a | Pellethane Reducer | \$ 56 |
| PER 7.5x4.5A | 7.5 | 4.5 | n/a | Pellethane Reducer with air test | \$ 62 |
| PER 7.5x4.8 | 7.5 | 4.8 | n/a | Pellethane Reducer | \$ 56 |
| PER 7.5x4.8A | 7.5 | 4.8 | n/a | Pellethane Reducer with air test | \$ 62 |
| PER 7.5x4.8x2.0 | 7.5 | 7.8 | 2.0 | Pellethane Reducer | \$ 54 |
| PER 7.5x4.8x2.0A | 7.5 | 4.8 | 2.0 | Pellethane Reducer with air test | \$ 60 |
| PER 7.5x4.8x2.5 | 7.5 | 4.8 | 2.5 | Pellethane Reducer | \$ 54 |
| PER 7.5x4.8x2.5A | 7.5 | 4.8 | 2.5 | Pellethane Reducer with air test | \$ 60 |
| PER 8.8x6.8 | 8.8 | 6.8 | n/a | Pellethane Reducer | \$ 75 |
| PER 8.8x6.8A | 8.8 | 6.8 | n/a | Pellethane Reducer with air test | \$ 81 |
| PER 8.8x6.8x4.6 | 8.8 | 6.8 | 4.6 | Pellethane Reducer | \$ 75 |
| PER 8.8x6.8x4.6A | 8.8 | 6.8 | 4.6 | Pellethane Reducer with air test | \$ 81 |

SECTION 1F

PER SERIES PELLETHANE CAPS

The PER Caps are used to cap all three Kwik Fit Housing sizes.

| Part Number | ID Dimension (a) | Description | List Price |
|-------------|---------------------|----------------|------------|
| PER 3.5CAP | 3.5 | Pellethane Cap | \$ 20 |
| PER 5.5CAP | 5.5 | Pellethane Cap | \$ 34 |
| PER 7.5CAP | 7.5 | Pellethane Cap | \$ 41 |