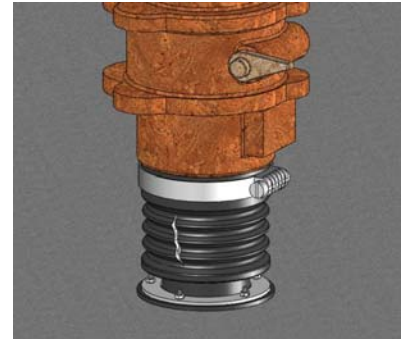


SB5B3.4 Pellethane Split Repair Boots Installation Instructions (For Replacement Repairs)

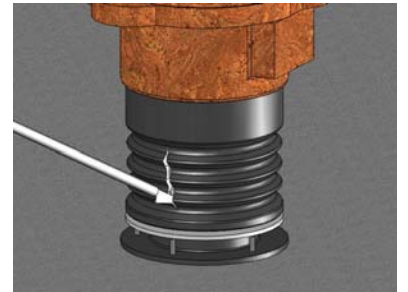
STEP 1

Remove the band clamps and the nuts from the penetration to be repaired. Save the nuts so they can be reinstalled once the new boot is in place.



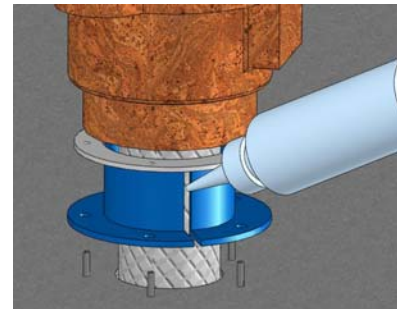
STEP 2

Cut away and remove the old boot leaving the metal ring intact.



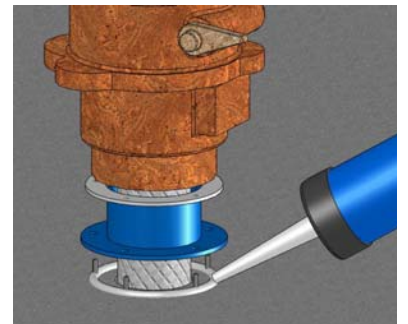
STEP 3

Slide the metal ring up and place the flanged portion of the repair boot around the pipe. Apply a liberal coating of Blue Seal Glue to both surfaces of the split that are to be joined. Hold the edges together until the seam will hold itself closed.



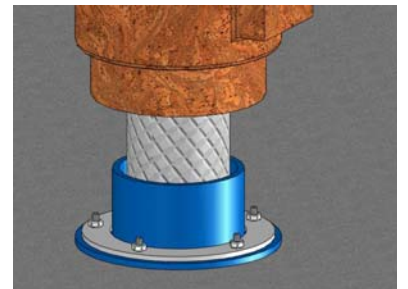
STEP 4

Apply a liberal bead of Bostik 1100 between the boot flange and the sump, then seat the flange onto the studs.



STEP 5

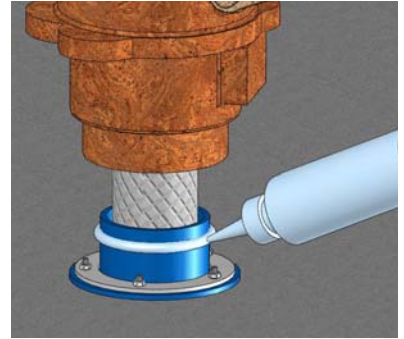
Reinstall the metal ring and the nuts.



SB5B3.4 Pellethane Split Repair Boots Installation Instructions (For Replacement Repairs)

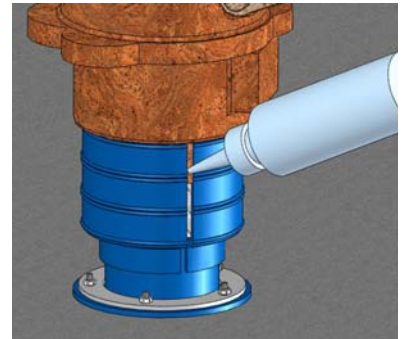
STEP 6

Apply a liberal bead of Blue Seal Glue around the cuff portion of the boot flange.



STEP 7

Install the upper portion of the repair boot around the pipe. Apply a liberal bead of Blue Seal Glue on both surfaces of the split that are to be joined.



STEP 8

Install the three band clamps. The top band clamp should be tightened to 45 inch pounds. The two bottom clamps should only be tightened enough to hold the split components together while the Blue Seal Glue cures. (Full cure for the Blue Seal Glue is 40 minutes.)

